

# \$1,899,888 - 38 Lissington Drive Sw, Calgary

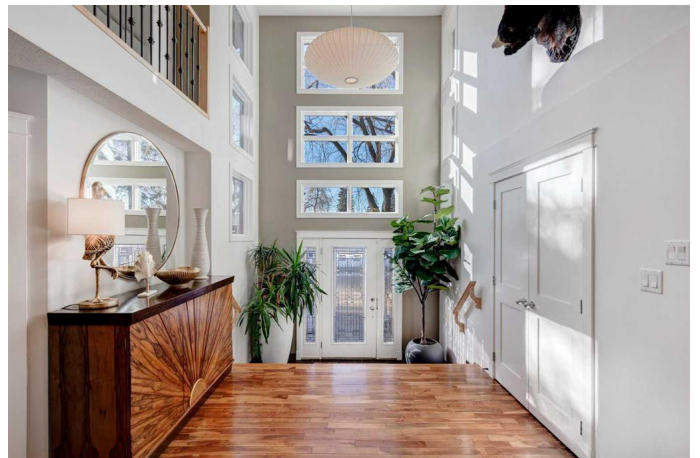
MLS® #A2202343

**\$1,899,888**

3 Bedroom, 4.00 Bathroom, 2,639 sqft  
Residential on 0.14 Acres

North Glenmore Park, Calgary, Alberta

Lissington Drive is the most prestigious street in North Glenmore Park. Front yard greets you with mature trees and maintenance free landscaping. Through the impressive two storey foyer you will be welcomed to a spacious and bright open floor plan. Tropical Acacia hardwood floors throughout the entire main floor, extending up the stairs, den and hallway. Beautiful kitchen showcases Bird's-eye maple cabinetry complete with quartz countertops and backsplash, large kitchen island with breakfast bar and a walk in pantry. 3 nice size bedrooms on second floor with open sitting area overlooking below. Master bedroom features lovely 5 pc bathroom which includes, large tub, steam shower, heated floor and double-sink vanity. Lower level is fully developed with large theatre room including system, 3 pc bathroom with heated floor, large storage /utility room with 2 high efficiency furnaces, AC for upper level, solid core interior doors. Other upgrades include new shingles on house and garage in 2022, New pressure treated wood fence and gates built in 2024 as well as 50k of poured concrete including patio and RV parking large enough to accommodate 42ft RV, oversized, heated double garage and 50amp electrical hook up which is currently used for EV charging. Super location, close to all amenities, including best schools, walking distance to Lakeview Golf Course, shopping, parks and transit. Check out virtual tour! You will love this ready to move in home!



Built in 2008

## Essential Information

|                |             |
|----------------|-------------|
| MLS® #         | A2202343    |
| Price          | \$1,899,888 |
| Bedrooms       | 3           |
| Bathrooms      | 4.00        |
| Full Baths     | 3           |
| Half Baths     | 1           |
| Square Footage | 2,639       |
| Acres          | 0.14        |
| Year Built     | 2008        |
| Type           | Residential |
| Sub-Type       | Detached    |
| Style          | 2 Storey    |
| Status         | Active      |

## Community Information

|             |                        |
|-------------|------------------------|
| Address     | 38 Lissington Drive Sw |
| Subdivision | North Glenmore Park    |
| City        | Calgary                |
| County      | Calgary                |
| Province    | Alberta                |
| Postal Code | T3E 5E1                |

## Amenities

|                |                                                                                                                                    |
|----------------|------------------------------------------------------------------------------------------------------------------------------------|
| Parking Spaces | 4                                                                                                                                  |
| Parking        | Concrete Driveway, Double Garage Detached, Garage Door Opener, Heated Garage, Insulated, Oversized, Parking Pad, RV Access/Parking |
| # of Garages   | 2                                                                                                                                  |

## Interior

|                   |                                                                                                                              |
|-------------------|------------------------------------------------------------------------------------------------------------------------------|
| Interior Features | Breakfast Bar, Double Vanity, Kitchen Island, Open Floorplan, Pantry, Quartz Counters, Soaking Tub                           |
| Appliances        | Central Air Conditioner, Dishwasher, Garage Control(s), Gas Stove, Microwave, Range Hood, Refrigerator, Washer/Dryer Stacked |
| Heating           | Fireplace(s), Forced Air, Natural Gas                                                                                        |
| Cooling           | Partial                                                                                                                      |
| Fireplace         | Yes                                                                                                                          |

# of Fireplaces 1  
Fireplaces Gas, Mantle, Stone, Three-S  
Has Basement Yes  
Basement Finished, Full

### Exterior

Exterior Features BBQ gas line, Private Yard  
Lot Description Back Lane, Back Yard,  
Maintenance Landscape, Tre  
Roof Asphalt Shingle  
Construction Stone, Stucco  
Foundation Poured Concrete

### Additional Information

Date Listed March 14th, 2025  
Days on Market 23  
Zoning R-CG

### Listing Details

Listing Office RE/MAX Real Estate (Central)



Data is supplied by Pillar 9â,,ç MLSÂ® System. Pillar 9â,,ç is the owner of the copyright in its MLSÂ® System. Data is deemed reliable but is not guaranteed accurate by Pillar 9â,,ç. The trademarks MLSÂ®, Multiple Listing ServiceÂ® and the associated logos are owned by The Canadian Real Estate Association (CREA) and identify the quality of services provided by real estate professionals who are members of CREA. Used under license.